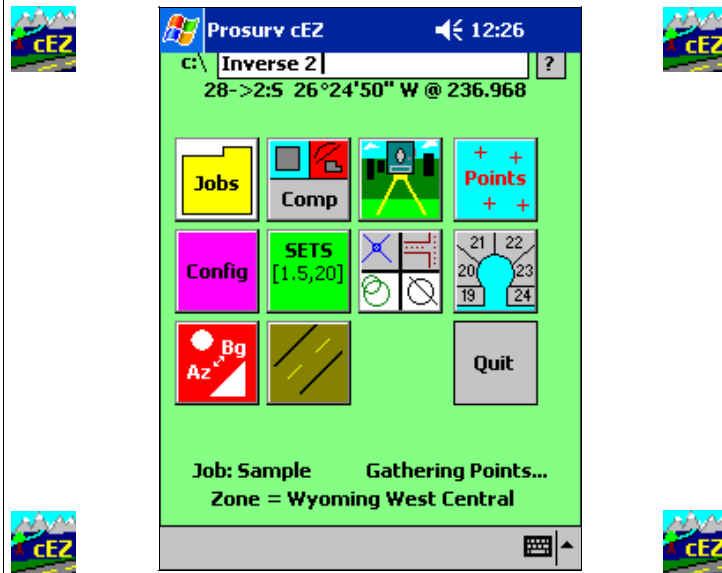


Prosurv cEZ Data Collection User's Manual



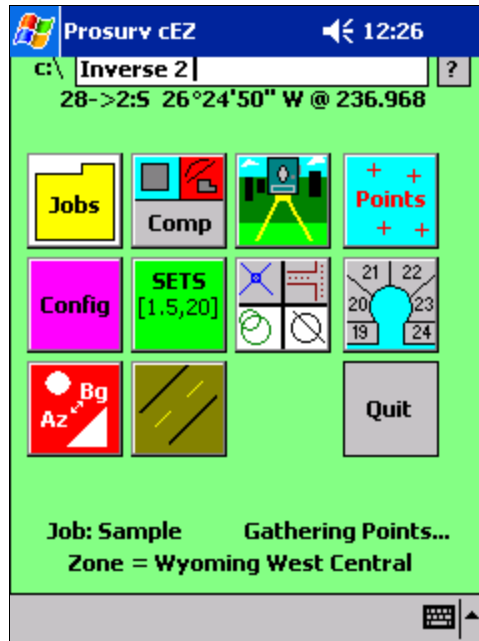
Version 1.0.2



© Copyright 2003
Prosurv LLC
All Rights Reserved
No part of this manual may be copied, electronically or otherwise without the expressed, written consent of Prosurv LLC.



Prosurv cEZ Screen



The Prosurv cEZ main screen has 10 large buttons (icons), plus a **Quit** button. At the top of the main screen is the command line text box. Every function in Prosurv cEZ can be accessed from the main screen.

Starting at the top left, and going towards the bottom right are:

- Jobs
- Comps
- Data Collection
- Points
- Config
- SETS
- Intersects
- Plotting
- Calculations and Conversions
- Baselines

Jobs

Prosurv cEZ JOBS

The Prosurv cEZ Jobs button has 7 functions:

1. **New Job**
2. **Open Job**
3. **Export Raw as Text**
4. **Import Points**
5. **Export Entire File as ascii**
6. **Export Specific Points as ascii**
7. **Merge Points from another job**

Create New Job

Tap **New** to create a new Prosurv cEZ job.

Enter the File Name for the new job and tap **Create**.

Prosurv cEZ will create and store the job in your Default folder, which in the example shown here is \Storage Card\Jobs\. The path for your default storage folder can be found in the ProsurvCE_Defaults.txt file located in the

\Program Files\Prosurv cEZ\ folder of your Pocket PC. Refer to Appendix B for more information about changing your ProsurvCE_Defaults.txt file.

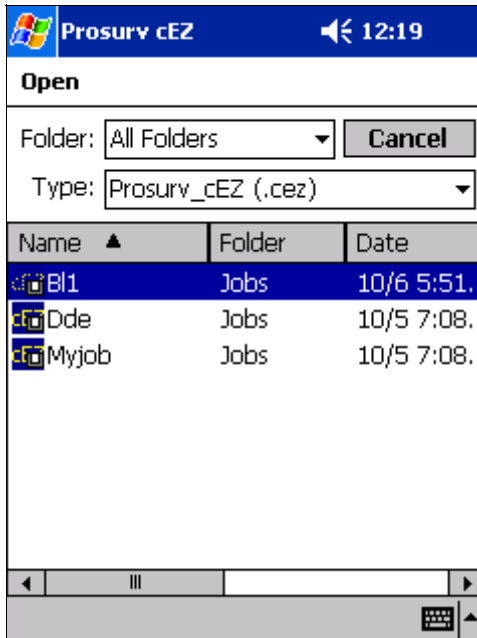
Open Existing Job

Tap the **Open** button to open an existing Prosurv cEZ job. If a job is already running, Prosurv cEZ stores vital job-specific information and then opens the new job.

Select the job you'd like to open by tapping the job once. Note that all Prosurv cEZ jobs have the cEZ icon.

When opened, the job is loaded, along with job-specific information that was stored with the job the last time it was saved.

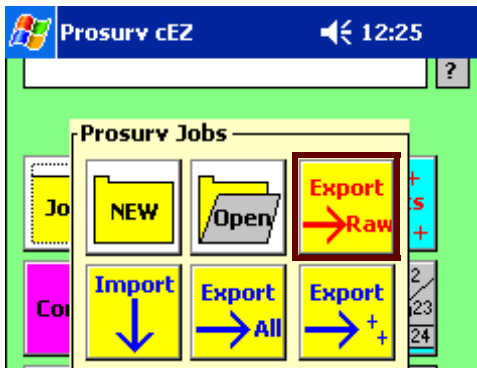
A small disk icon in the cEZ icon means that the job is stored on an SD or CF card.



Export Raw Data

You can quickly and easily export your Prosurv cEZ raw data as a text file by tapping the Export Raw button.

Note: The exported file's name will always be your job name with a .raw extension. Prosurv cEZ does not prompt you for a file name, so if the file already exists,



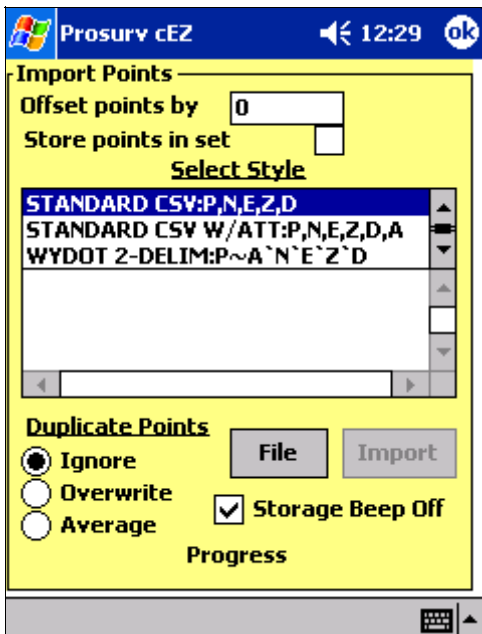
it will be *overwritten*.

Import Points

The Import Points routine lets you import virtually any ascii file.

Several options let you customize the import. First, you can offset the incoming point numbers by a given amount. For example, you can add 1000 to each incoming point number.

Next, you can select to store the point numbers of the points being imported directly into a SET. This powerful option makes it possible to import points for Stakeout, then simply stake the SET that represents those points.



For example, let's say you imported points 1000.1010 and had Prosurv cEZ store them in a SET. When they were imported, the point numbers were stored in SET #5. So, to stake those points, in the Data Collection Radial Stakeout routine, simply enter ;5.

Next, Prosurv cEZ let's you select 1 of 18 pre-defined import/export STYLES. The most popular style is the comma-delimited point #, northing, easting, elevation, feature code style, or P,N,E,Z,F. Other styles include the ability to import/export Latitude/Longitude and State Plane Coordinates.

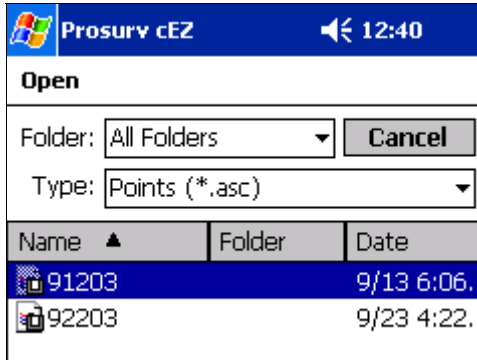
Of course you can create your very own import/export styles just by modifying the ascsty.acs file located in the \Program Files\Prosurv cEZ\ folder of your Pocket PC. See Appendix D: Import/Export Styles for more information.

When importing, you have 3 choices for dealing with Duplicate points:

- Ignore incoming duplicate points
- Overwrite existing points with the imported points
- Average duplicate points

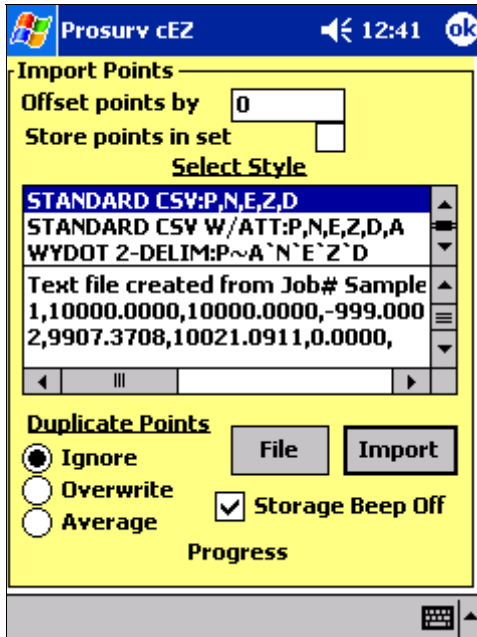
Tap the **File** button to select the asc file you wish to import. Your Pocket PC will display all files that have the .asc extension (by default).

Then just tap that file to select it.



The large text box now displays the contents of the text file.

Tap the **Import** button to begin importing the points.



Export Entire Job
Tap the **Export All** button to Export all of your Prosurv cEZ points as an .asc file.

Options include:

- Decimal Places
- Scale Factor
- Point Order
- Header
- Conversions to US Foot/Int'l Foot or Metric

Tap the **File** button to enter a file name to save as.

Enter a file name and tap **OK**. Your points won't be exported until you tap the **Export** button shown in the first window.

Export Entire Job

Decimal Places (0-12)

Scale Factor

Select Style

- STANDARD CSV:P,N,E,Z,D
- STANDARD CSV W/ATT:P,N,E,Z,D,A
- WYDOT 2-DELIM:P~A`N`E`Z`D
- WYDOT 1-DELIM:P~N~E~Z~D~A
- TERRAMODEL:P,N,E,Z,D~A

Progress

Point Order: Numeric Record

Header

File Export

Convert to:

US Foot

Int'l Foot

Exit

Enter a file name and tap **OK**. Your points won't be exported until you tap the **Export** button shown in the first window.

Save As

Name:

Folder:

Type:

Location:

OK Cancel

123	1	2	3	4	5	6	7	8	9	0	-	=	←
Tab	q	w	e	r	t	y	u	i	o	p	[]	
CAP	a	s	d	f	g	h	j	k	l	;	'		
Shift	z	x	c	v	b	n	m	,	.	/			↵

Export Specific Points

This routine lets you export up to 200 points at one time. You can enter a point list, or a SET # to be exported.

Options include:

- # of Decimal Places
- Scale Factor
- Point order
- Header
- Conversion to US Foot/Int'l Foot or Metric

Enter a point list of the points to be exported, such as:
1.25,5015.5075

A period=through
A comma=and

Or, you can enter a pre-defined SET of points by using a colon, asterisk, or semi-colon before the SET #, such as ;5 (which will export the points in SET #5).

You can select one of 18 pre-defined export styles. The most common export style is P,N,E,Z,F. And, you can even define your own export style (see Appendix D).

Tap the **File** button to enter the file name of

Prosurv cEZ
12:51
ok

Export Specific Points

Decimal Places (0-12)

Scale Factor

Include #'s

Select Style

STANDARD CSV:P,N,E,Z,D

STANDARD CSV W/ATT:P,N,E,Z,D,A

WYDOT 2-DELIM:P~A`N`E`Z`D

WYDOT 1-DELIM:P~N~E~Z~D~A

Point Order: Numeric Set

US Foot
 Int'l Foot
 Header

Progress

Prosurv cEZ
12:57

Save As

Name:

Folder:

Type:

Location:

123	1	2	3	4	5	6	7	8	9	0	-	=	←
Tab	q	w	e	r	t	y	u	i	o	p	[]	
CAP	a	s	d	f	g	h	j	k	l	;	'		
Shift	z	x	c	v	b	n	m	,	.	/	>		

the exported points.

Once you've selected a file name, tap **OK** to begin the export.

Merge Points Into Job

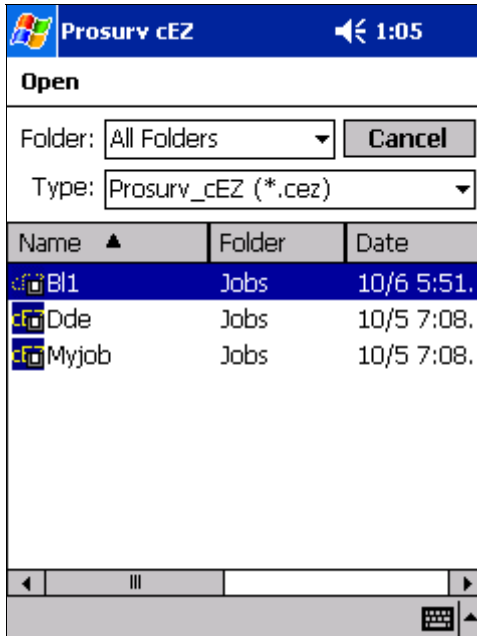
Use this routine to merge points directly from another Prosurv cEZ Job to your current Job. This routine can be used in place of a "control file". For example, you may have a large subdivision, where parts of the sub'd need to be staked from time to time. You could have one Prosurv cEZ job that contains your control points for that job. Then, when you need to return to that job, you could Merge those points

into a new job, created just for your specific assignment.

Your control points for that job might be 1 through 100 or 1.100. So enter 1.100 in the text box.

Tap the **File** button to select the file which contains the points to be merged with your current job.

Now tap the name of the file that you want to select.



The path to the job whose points are being merged is displayed.

Now tap the **Merge** button to complete the operation.

