



Prosurv cEZ

Version 1.0.0



Installation & Quick Start Guide

Contact Information

Prosurv, LLC
185 Louis L'amour Lane
Clark, WY 82435

Toll-free 888-647-9500
Web site: www.prosurv.com
E-mail: sales@prosurv.com
techsupport@prosurv.com



Prosurv cEZ Installation and Quick Start Guide

Thank you for purchasing Prosurv cEZ Data Collection! Your purchase comes with 15 days of free tech support...so please feel free to call toll-free 888-647-9500 or e-mail us at techsupport@prosurv.com if you have any questions about installing or using Prosurv cEZ!

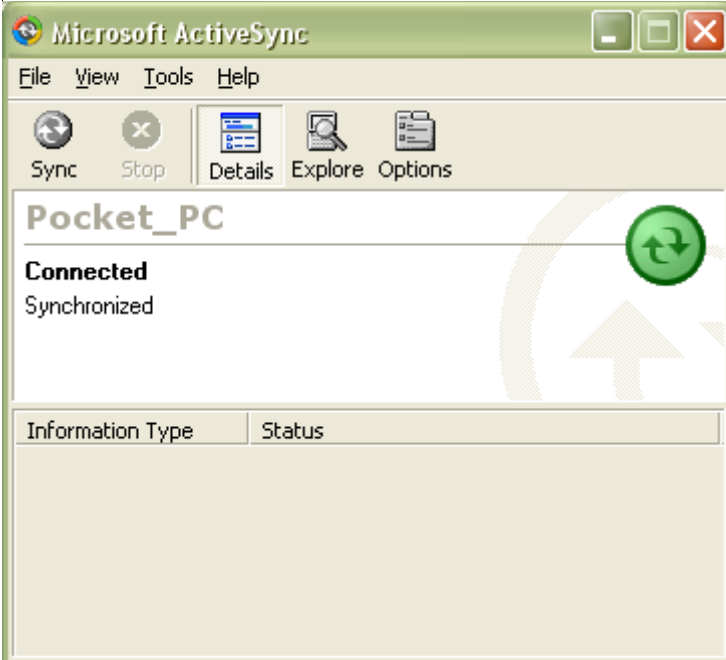
What's on the CD

The Prosurv cEZ CD contains several files used for installation of Prosurv cEZ to your Pocket PC. The CD also includes several Adobe Acrobat pdf files:

- This installation guide
- A guide for installing and using the **Bluetooth®** wireless technology solution
- Prosurv cEZ Manual

Begin the Installation

Before installing Prosurv cEZ, you need to have a connection already established between your PC and your Pocket PC device. Use Microsoft ActiveSync® to establish the connection. If you have not yet done so, you need to install Microsoft ActiveSync® to your PC. **ActiveSync® is included on the Prosurv cEZ CD for your convenience. To install Microsoft ActiveSync®, run the MSASYNC.EXE file from the Prosurv cEZ CD.** Then follow the on-screen instructions to complete the installation.



Once your connection is established, you will see the screen shown to the left.

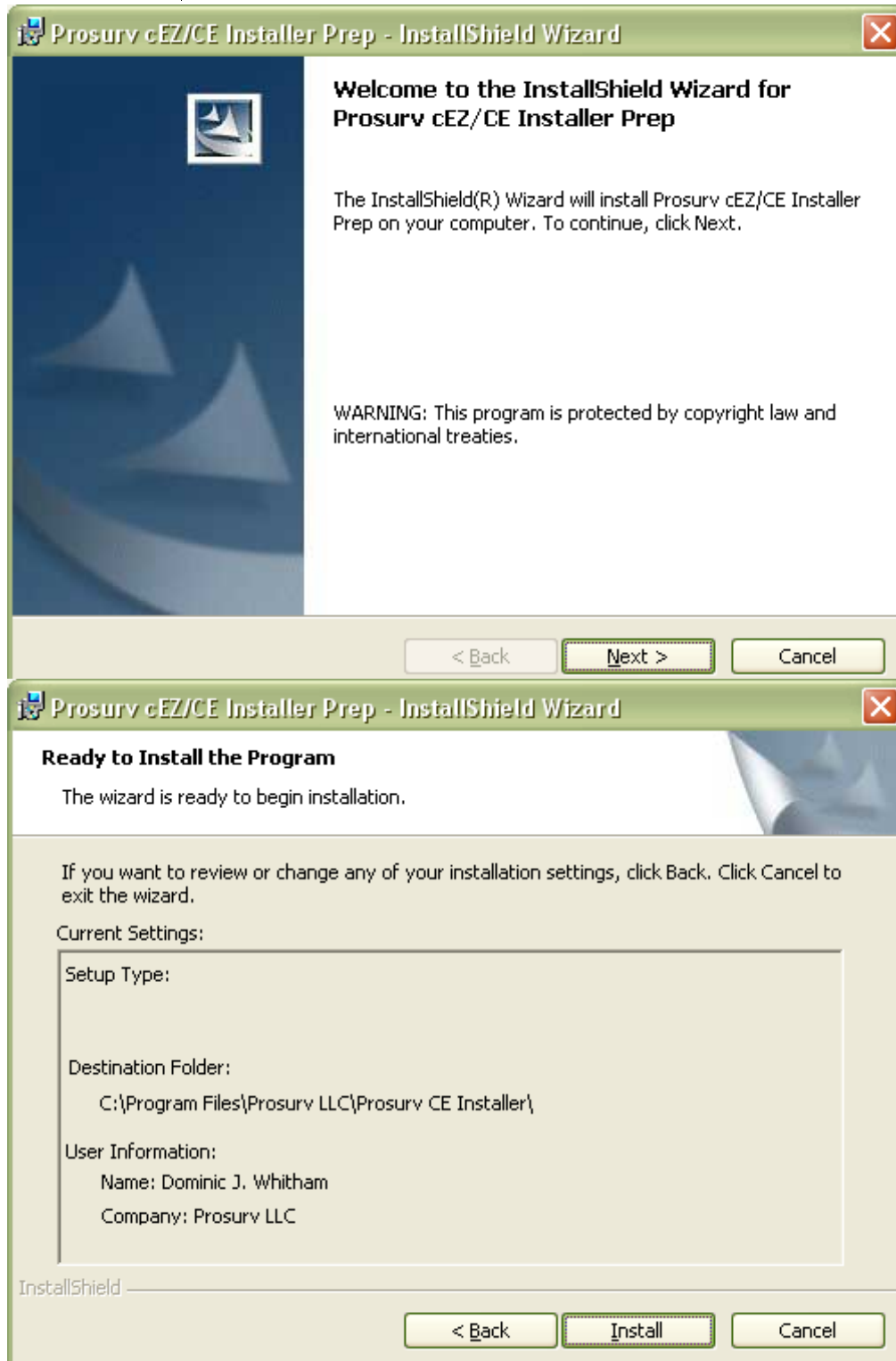
Prosurv cEZ Installation and Quick Start Guide

Installation of Prosurv cEZ is done in four steps:

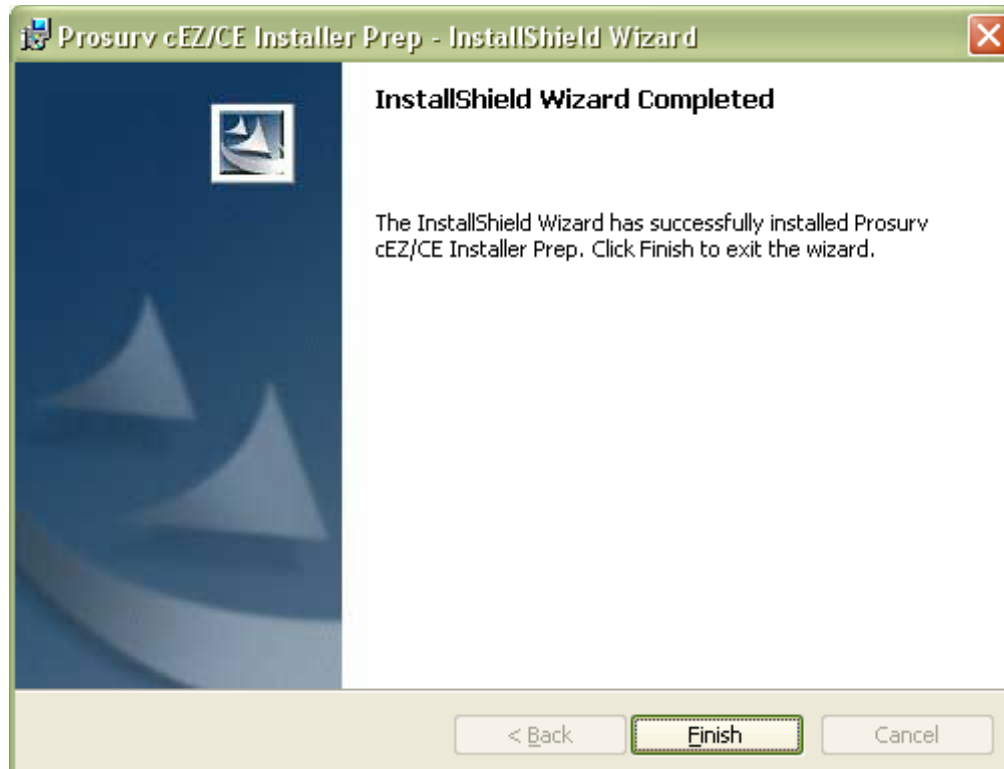
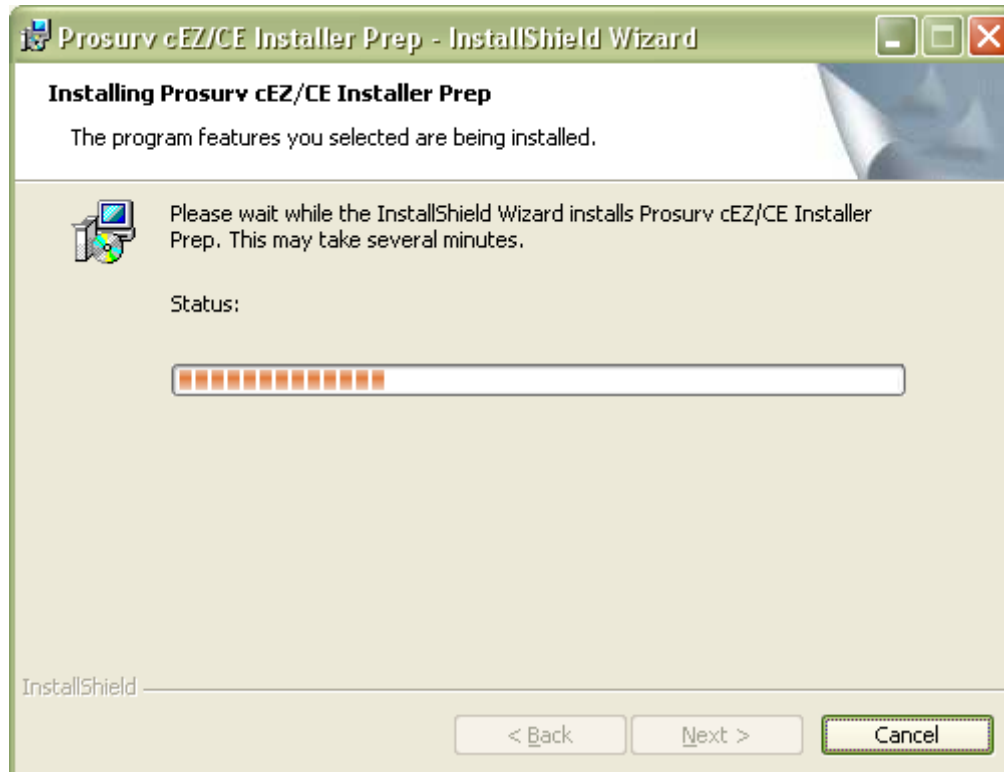


Step 1: Double-click the *Run This First.exe* file

Double-click the *Run This First.exe* file. This will install certain supporting files to your PC to ensure that Prosurv cEZ will install on your device. Follow the on-screen instructions to complete this installation.



Prosurv cEZ Installation and Quick Start Guide



Step 1 has now been completed.

Prosurv cEZ Installation and Quick Start Guide

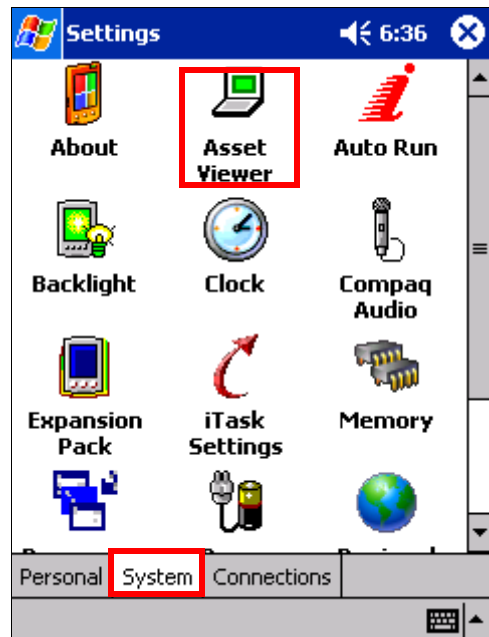
Step 2: Find and Write Down Your Pocket PC's Serial Number

This step is necessary because Prosurv cEZ will ask you for a registration key during installation. Without the registration key, Prosurv cEZ will not be usable. The registration key is tied directly to your Pocket PC's serial number.

1. Tap the screen to the left of the word Start on your Pocket PC to activate the drop down Start Menu.
2. Tap ***Settings***

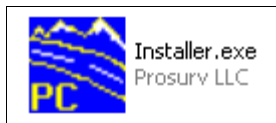
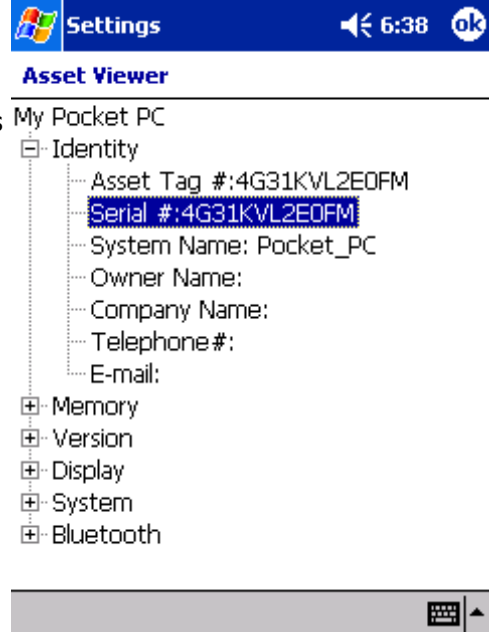


3. Tap the ***System tab***
4. Tap the ***Asset Viewer*** Icon



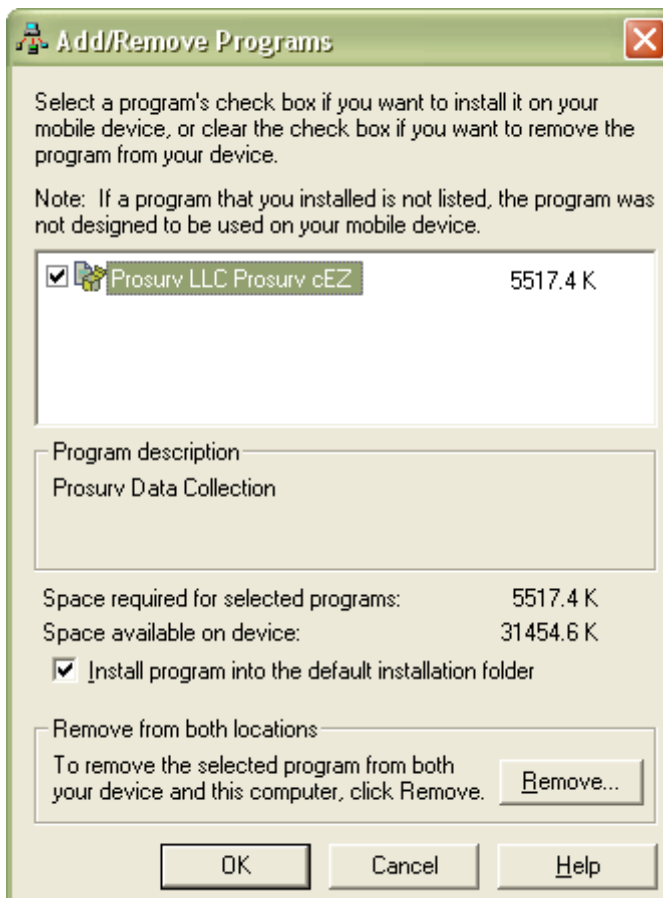
Prosurv cEZ Installation and Quick Start Guide

Write down your Pocket PC's Serial #. You must contact Prosurv LLC to obtain your Prosurv cEZ Registration Key. You may call toll-free **888-647-9500** or e-mail us at techsupport@prosurv.com. You may call or e-mail 24 hours a day, 7 days a week to obtain your Prosurv cEZ Registration Key. When e-mailing, be sure to include the Serial # of your Pocket PC.



Step 3: Install Prosurv cEZ to your Pocket PC

Double-click the **Installer.exe** file to begin installing Prosurv cEZ to your Pocket PC.



Note: ActiveSync must be installed, and a connection to your Pocket PC must already have been established in order to complete this step.

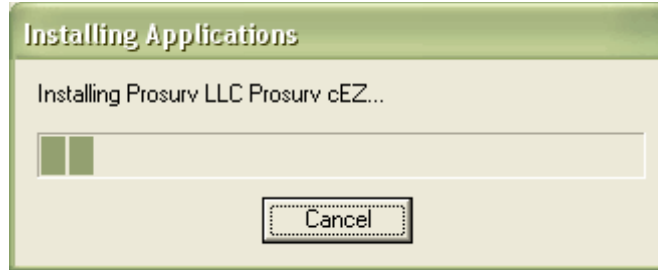
Your Activesync connection should display *Synchronized* **before** you double-click the Installer.exe file.

You should see the *Prosurv LLC Prosurv cEZ* caption next to the check box. Make sure the box is checked.

Also be sure that the "Install program into the default installation folder" caption is checked as well.

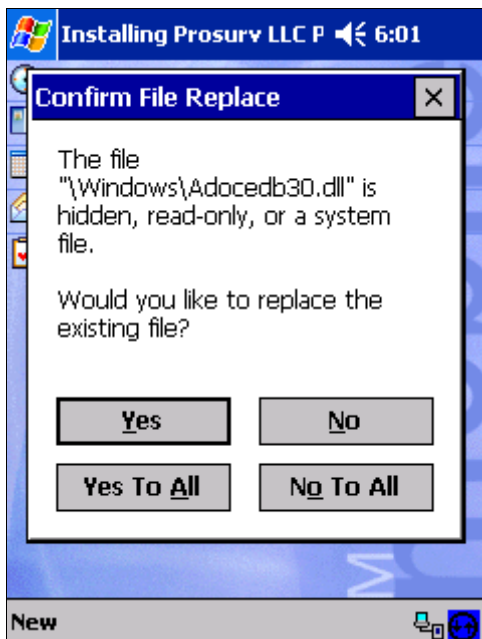
Now press OK to begin the installation!

Prosurv cEZ Installation and Quick Start Guide



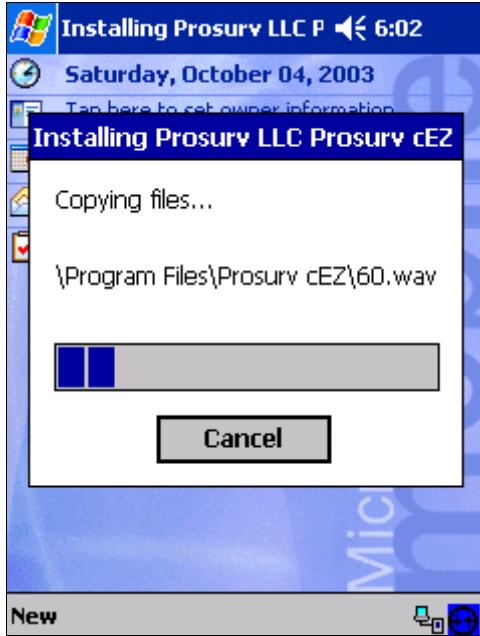
Tap OK. The necessary installation files have now been copied to your Pocket PC. Now we need to complete the installation on your Pocket PC...

Step 4: Completing the installation on your Pocket PC



Be sure to tap **No to All** on the Pocket PC.

Prosurv cEZ Installation and Quick Start Guide



Installation of Prosurv cEZ to your Pocket PC has now begun.



Once installation has completed, your Pocket PC's screen will return to the familiar Today screen.

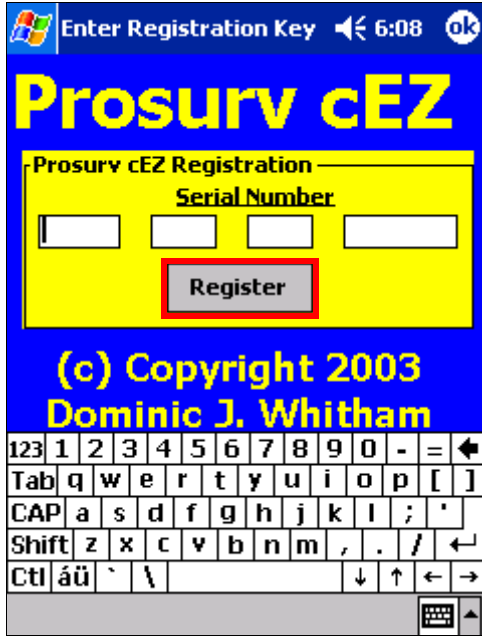
To run Prosurv cEZ, tap the **Start** Menu and select **Programs**.

You should now see the Prosurv cEZ Icon near the bottom of the screen.

Tap the Prosurv cEZ Icon to start Prosurv cEZ.



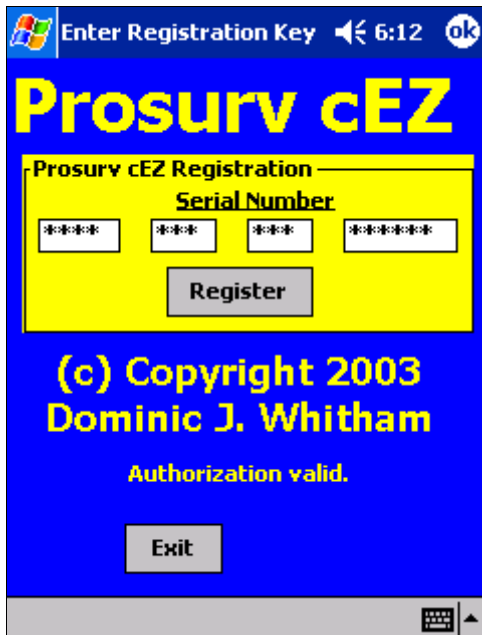
Prosurv cEZ Installation and Quick Start Guide



You're now asked to enter the Registration Key (Prosurv Serial Number) that you obtained in **Step 3** (or when you purchased Prosurv cEZ).

Note: This is not the serial number of your Pocket PC, but rather the serial number you obtained from Prosurv LLC that is based on your Pocket PC's serial number.

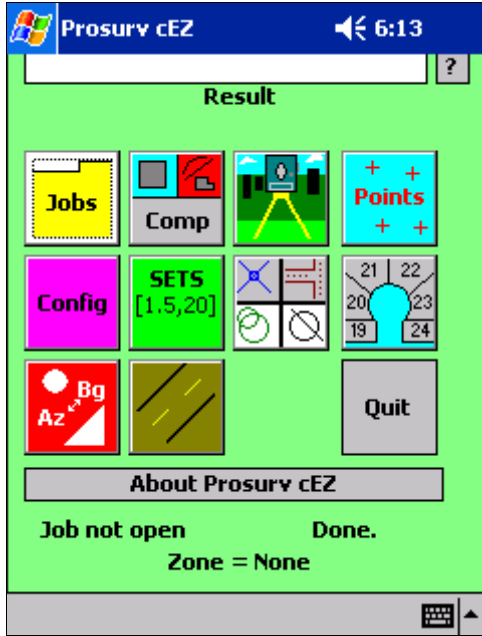
Carefully enter the key and tap the **Register** button.



If all goes well, you will see "Authorization valid", and Prosurv cEZ will finish Loading...

It can take anywhere from **30 to 70 seconds** for Prosurv cEZ to "Boot up", depending on your Pocket PC and it's available memory.

Prosurv cEZ Installation and Quick Start Guide



Prosurv cEZ has now been completely installed!

You are now ready to begin using Prosurv cEZ.

Several job files have been included on your Prosurv cEZ installation CD. You can copy these jobs to your Pocket PC and then open them in Prosurv cEZ. These jobs have the extension **.cez** for easy identification. In fact all of your Prosurv cEZ jobs will have the **.cez** extension.

If you'd like to get started using your own job, simply tap the **Jobs** folder on the main screen. Then, simply tap the **New Job** icon, enter a file name, and tap create.

Important: Be sure that the path for a new job exists before attempting to create a job there. By default, Prosurv cEZ is setup to store all jobs to an SD (Secure Digital) storage card. The path for the storage card is simply **\Storage Card**. If a **\Jobs** folder does not exist on the SD card, it will be created for you automatically.

Information you should know: Editing Your ProsurvCE Defaults.txt file

Prosurv cEZ gives you an easy way to change many "default" settings, including which instrument you use, your default rod height, and especially your **default path**.

Your Prosurv cEZ CD comes with a text file called **ProsurvCE_Defaults.txt** that you can modify and copy to your Pocket PC. Once you set your defaults, all of your new jobs will use those defaults. Let's say most of your jobs are in US Foot, but once in a while you need to work in Metric. So, your defaults file is set to **Units=3** which is US Foot. You create a new job, go to Config—>Decimals & Units and change your job's units to Metric. When you close that job by opening or creating a new job, or if you Quit Prosurv cEZ, your job's units (metric) **will be stored with that job**. So when you open it again, it's still in metric. The same is true with switching to a different instrument and so on.

Important items that you may wish to change are shown in **RED** below (this is a partial list):

- **DefaultFolder=\Storage Card\Jobs**
- **Instrument=5**
- DAL=4
- DALTolerance=0.003
- ComPort=1
- CoarseFine=1
- HTolerance=5
- VTolerance=5
- DCScale=1.0
- Elevations=On
- **Units=3**
- DecimalsCoor=3
- DecimalsAngle=0
- **DecimalsDistance=3**
- Stations=1
- **Target=5.0**

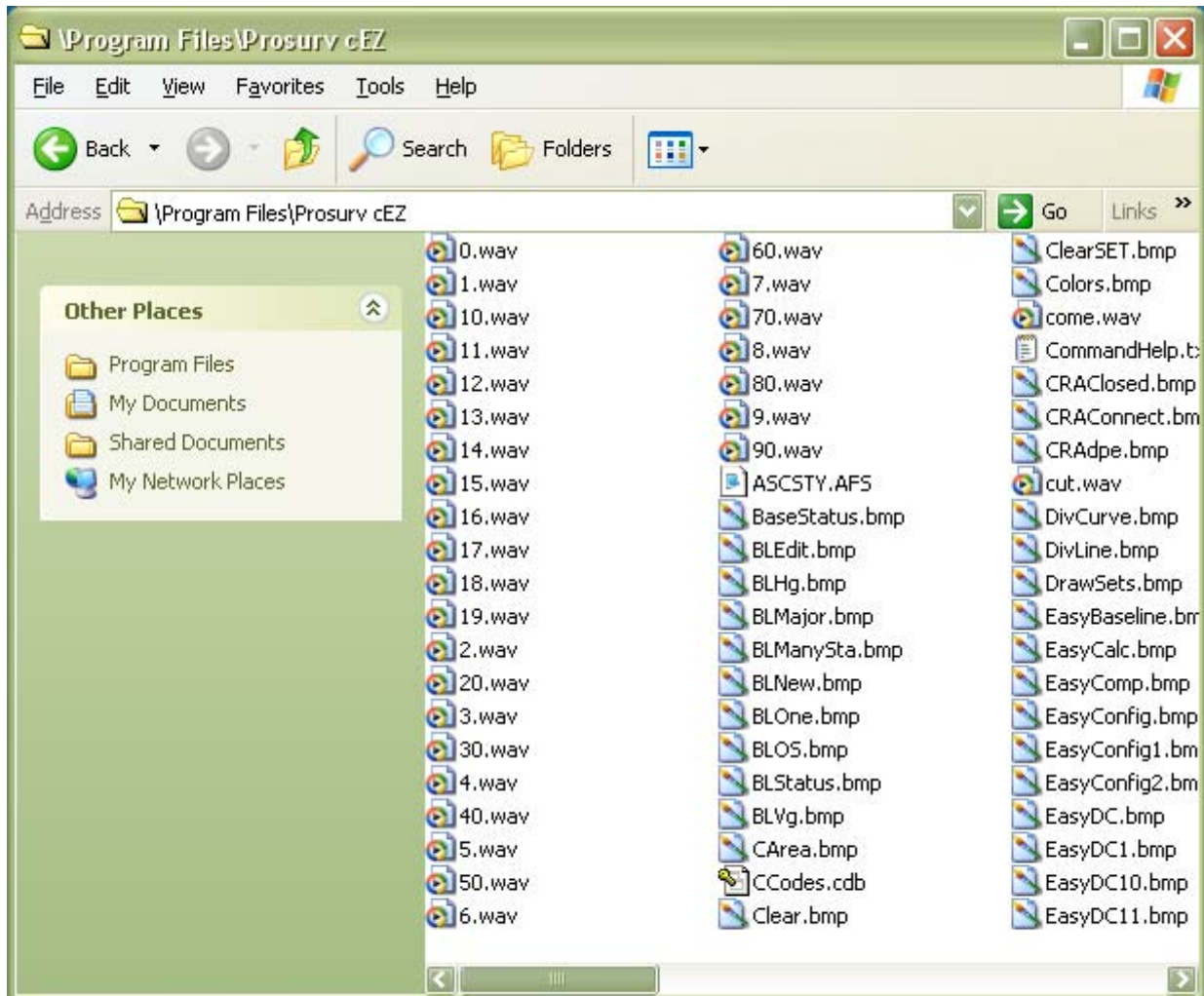
Note: You can modify the ProsurvCE_Defaults.txt file with a job running. However, changes only take effect when you create a New Job.

Appendix B of the Prosurv cEZ User Manual has specific information for setting up your defaults file.

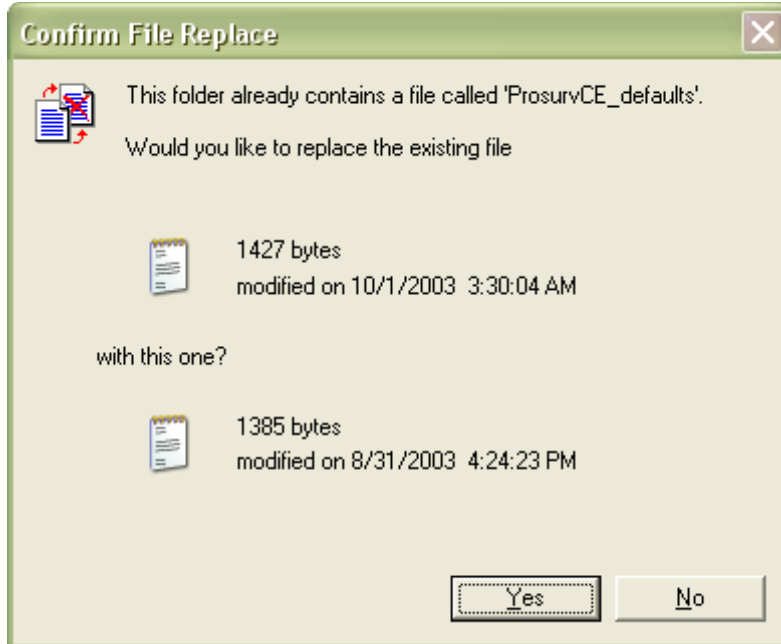
Prosurv cEZ Installation and Quick Start Guide

To change some or all of your default settings:

1. Copy the ProsurvCE_Defaults.txt file from your CD to your PC. Be sure that the properties for this file are **not** set to Read-Only.
2. Double-click the file to open it using Notepad.
3. Make the changes to your file, following the information as shown in **Appendix B** of the Prosurv cEZ User's Manual.
4. Using ActiveSync, copy the file to the \Program Files\Prosurv cEZ\ directory of your Pocket PC, as shown below:



Prosurv cEZ Installation and Quick Start Guide



Be sure that the screen shown on the left appears. If it doesn't, then you're not pasting the file to the correct folder of your Pocket PC.

Proceed by clicking Yes.

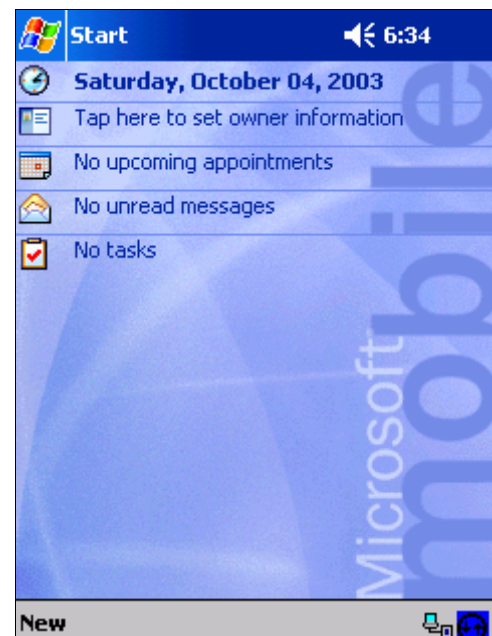
Getting Started: Tips and Techniques



You may notice that there's no way to "close" Prosurv cEZ while it's running. However, you can simply tap the **Start** button to activate the Start Menu while Prosurv cEZ is running.

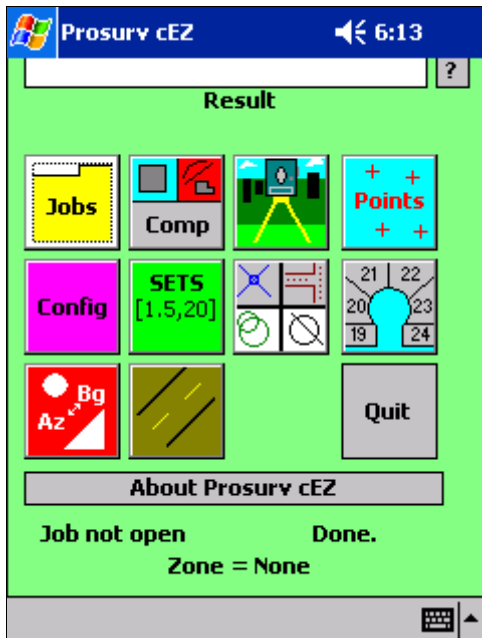
You'll also notice that there's now a **small cEZ icon** at the top of the Menu. Tapping the **Today** selection will return you to the familiar Today Screen that you see before you run Prosurv cEZ.

Then, you can tap the **cEZ icon** to return to Prosurv cEZ.

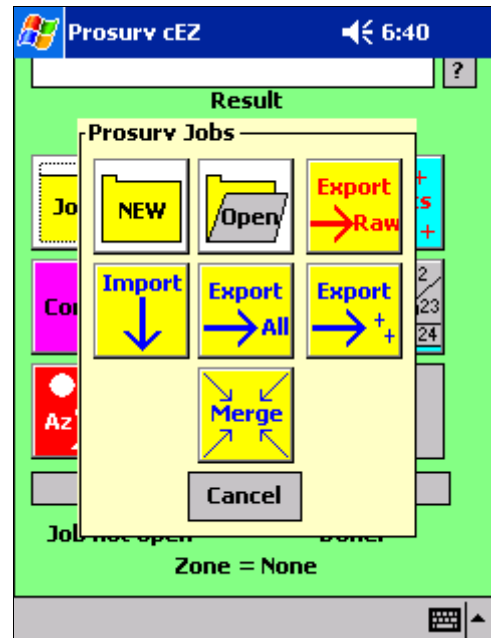


Prosurv cEZ Installation and Quick Start Guide

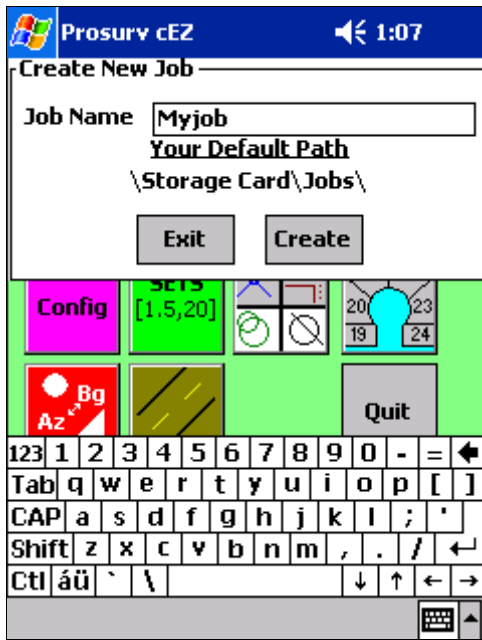
Creating your first Prosurv cEZ Job



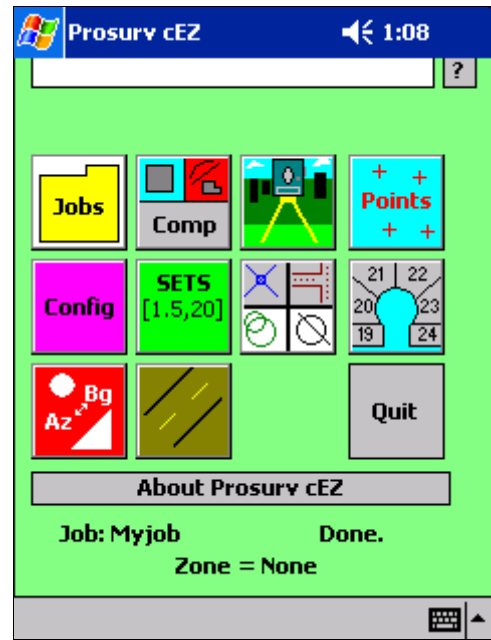
Tap the **Jobs** folder to begin



Tap **New**



Enter the job name and tap **Create**



After a few seconds, **Myjob** is ready

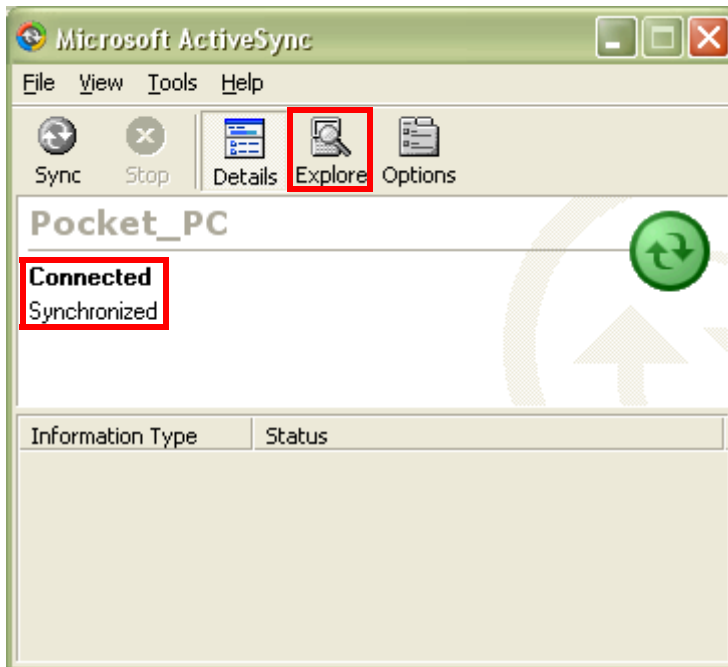
Prosurv cEZ Installation and Quick Start Guide

Copying a Job From Your PC

Installer.exe	24 KB	Application	6/6/2003 12:02 AM
Setup.exe	220 KB	Application	3/27/2000 2:00 AM
Bl1.cEZ	224 KB	CEZ File	9/25/2003 11:00 PM
Comps.cEZ	152 KB	CEZ File	9/26/2003 12:24 AM
Dctest1.cEZ	200 KB	CEZ File	9/25/2003 8:42 PM
Sample.cEZ	368 KB	CEZ File	9/26/2003 2:03 PM
Setup.ini	1 KB	Configuration Settings	9/20/2003 7:54 PM
ReadMe.txt	2 KB	Text Document	6/6/2003 1:29 AM
Prosurv_cEZ.Arm 1100 (4K) v...	5518 KB	WinZip File	10/3/2003 2:51 PM

Your Prosurv cEZ CD comes with several sample Jobs. Copying jobs to and from your PC is easy by using ActiveSync. Another choice is to use a Compact Flash or SD card to transfer your files. Card readers are widely available, if your computer does not have a built in CF or SD card reader. **Copy the job by Right-clicking and select copy, or highlight the job and press Ctrl-C.** In this example, we'll be copying the **Bl1.cEZ** job to your Pocket PC.

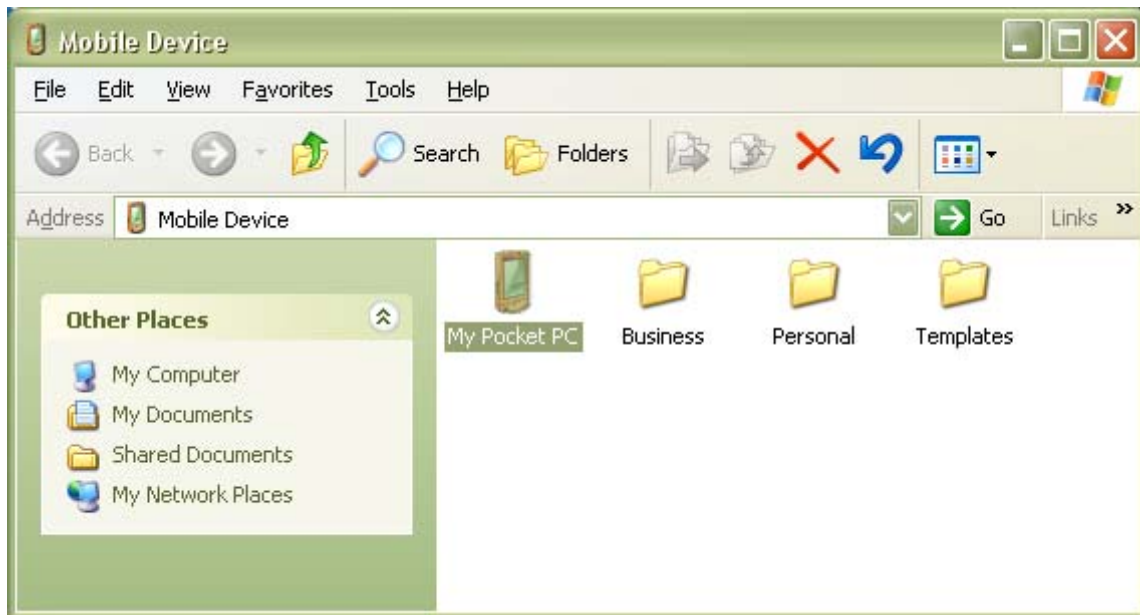
First, copy the sample jobs from the CD to your PC. Once they're copied, be sure that the properties of each job file do not have the "read only" box checked. Prosurv cEZ jobs can easily be recognized by their **.cEZ** extension. If you can not see the file extensions, go to your Folder options and be sure that "Hide File Extensions" is not checked.



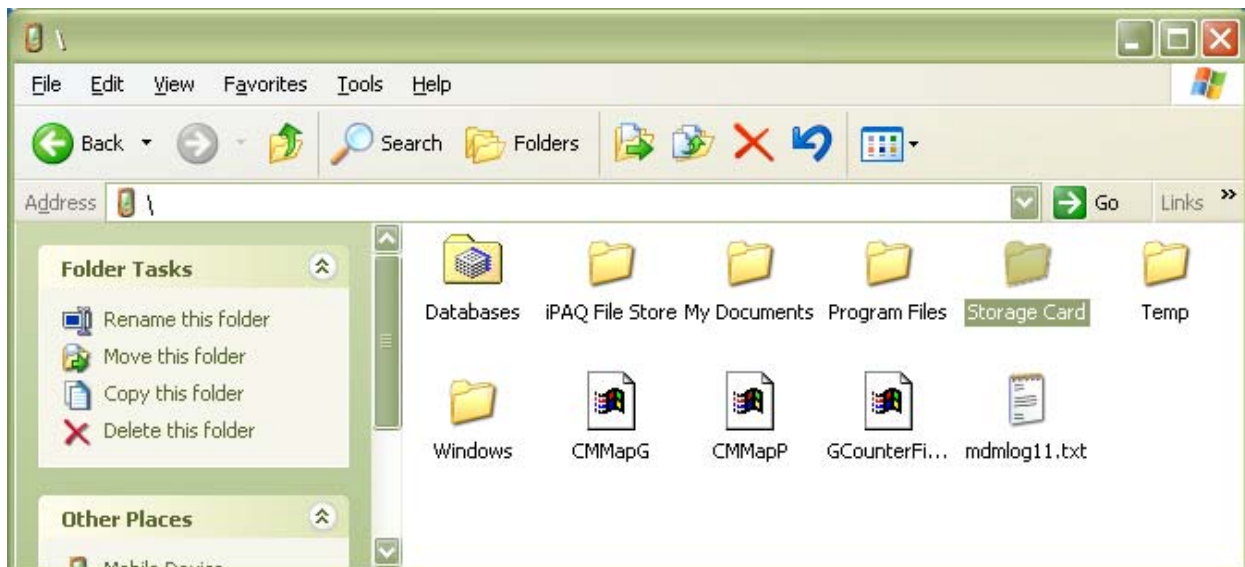
Begin by making sure that your Pocket PC is **Connected** and **Synchronized**.

Then tap the **Explore** button. This lets you view all the files that are on your Pocket PC, including those on any CF or SD card that has been inserted into your Pocket PC.

Prosurv cEZ Installation and Quick Start Guide

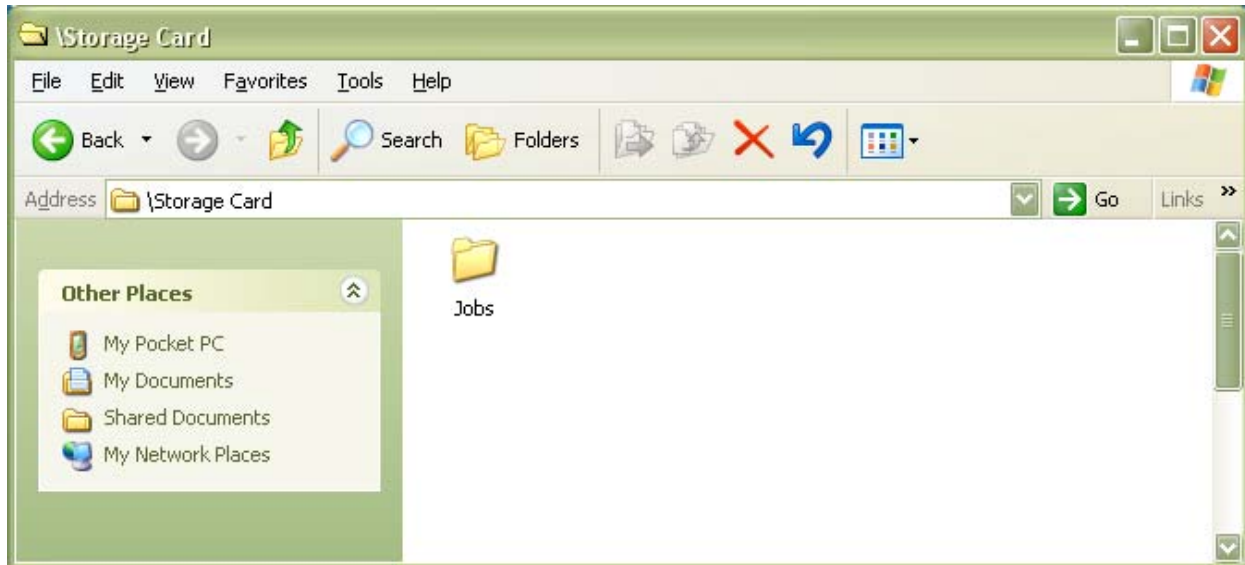


Double-click on **My Pocket PC**

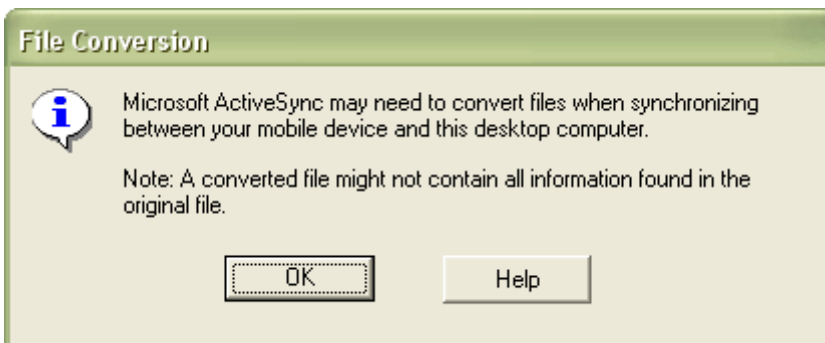


By Default, Prosurv cEZ jobs are stored in the \Storage Card\ folder, in another folder called Jobs. The Jobs folder is created automatically by Prosurv cEZ if it doesn't already exist. Double-click the Storage Card folder to see the Jobs folder, shown below.

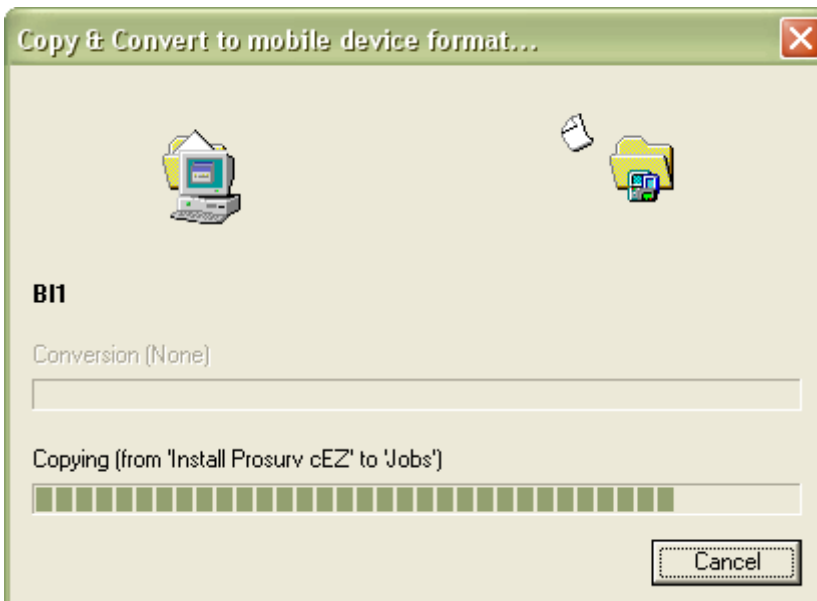
Prosurv cEZ Installation and Quick Start Guide



Now, paste the BI1.cez job into the Jobs folder using Edit—>Paste, or by right-clicking and selecting Paste.

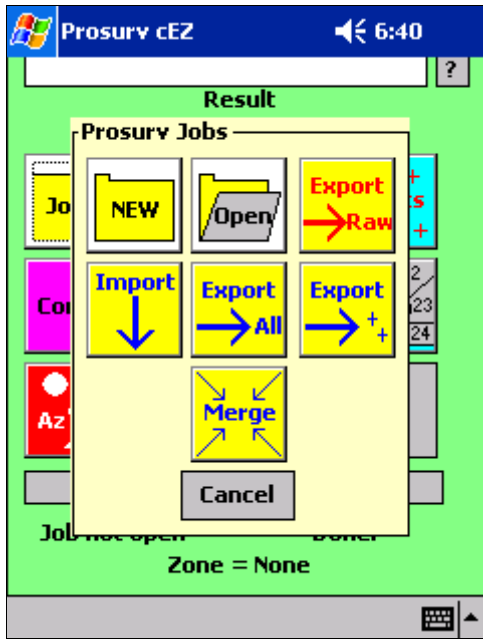


Initially, you might see the window shown left.

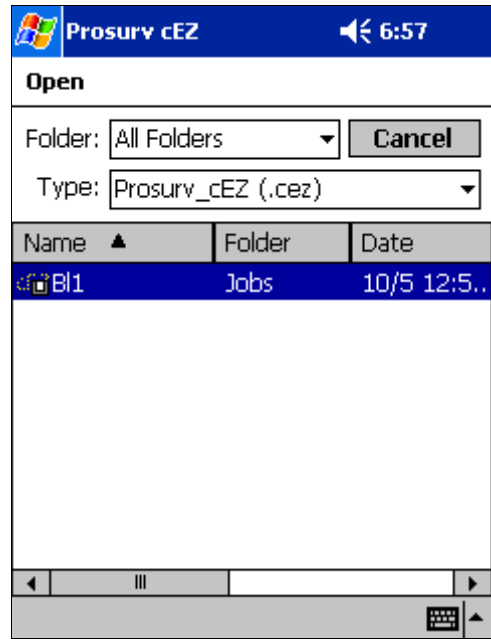


BI1.cez is copied from your PC to your Pocket PC.

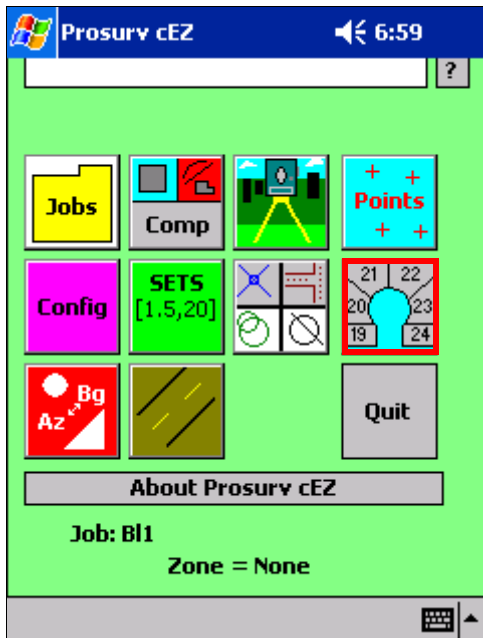
Prosurv cEZ Installation and Quick Start Guide



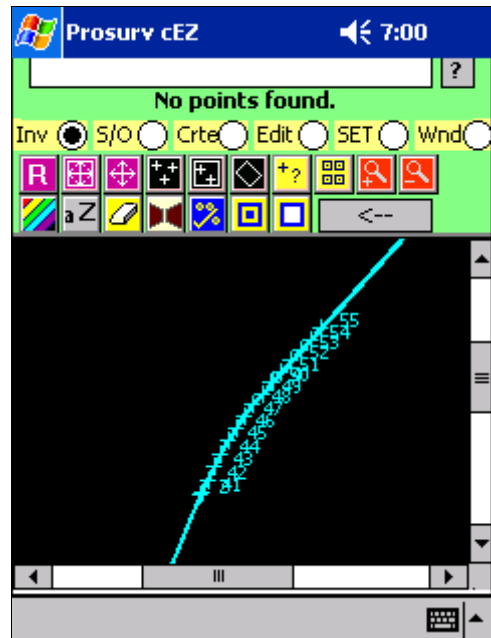
Tap **Jobs**, then tap **Open**



A list of every cEZ job will be shown.
Tap BI1 to open the job.
Note the small disk symbol indicating that the job is on the Storage Card.



Job **BI1** is now ready to go!

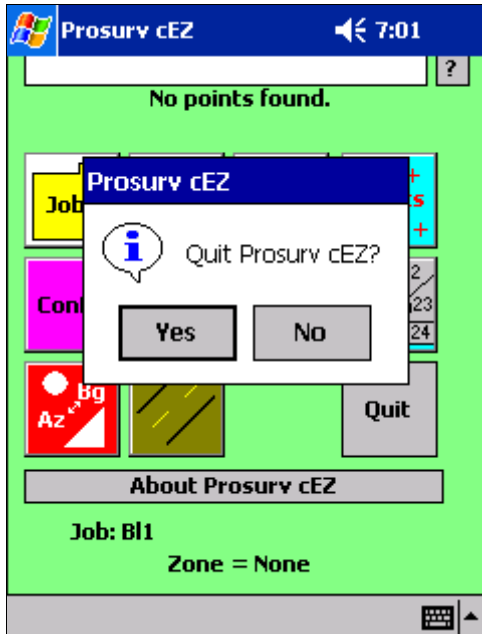


Job **BI1** is now ready to go!

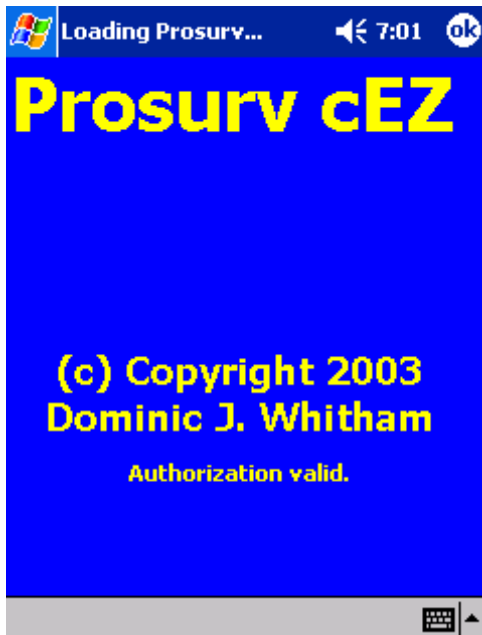
Prosurv cEZ Installation and Quick Start Guide

Quitting and Re-Starting Prosurv cEZ

When you finish a job or at the end of the day, you don't have to quit Prosurv cEZ. You can create new jobs or open existing jobs without leaving (quitting) Prosurv cEZ. However, from time to time, you may wish to quit Prosurv cEZ. Whenever you open a new job or quit Prosurv cEZ altogether, Prosurv will close your current job, saving all job-specific defaults.



To Quit Prosurv cEZ, simply tap the **Quit** button on the main screen. Prosurv cEZ will ask you to confirm that you want to quit.



You can re-start Prosurv cEZ two different ways. First, you can re-start by tapping the Start button followed by tapping the **cEZ** Icon. Prosurv cEZ now displays "Authorization valid."

Normal load time is between 35 and 75 seconds, depending on your Pocket PC and other factors such as memory. It is recommended that you not have any other programs running when using Prosurv cEZ. To stop other programs that have been run, go to Settings—>System—>Memory and tap "Running Programs". Select the program(s) you want to end and tap Stop. Then tap OK in the upper right corner.

Prosurv cEZ Installation and Quick Start Guide



Once Prosurv cEZ is finished loading, Prosurv cEZ will prompt you to open the last job you were in. Tap Yes to re-open that job, or No. If you tap No, then you'll have to create a new job or open an existing job to begin using Prosurv cEZ.

The second method of opening a job is to simply locate that job on your Pocket PC using the File Explorer on your Pocket PC. Locate the job you need, then tap the job you want to open. Remember, all Prosurv cEZ jobs will display the cEZ icon next to them in the Pocket PC. **It is recommended that you only have one instance of Prosurv cEZ running at one time. Be sure that when opening a job by tapping it, you don't start two or more instances of Prosurv cEZ running at the same time.**

Once again, thank you for purchasing Prosurv cEZ, and Happy Surveying!

One final **important** note: When copying files using Microsoft ActiveSync, ActiveSync will attempt to convert the files being copied if it feels that a conversion is needed. This will definitely occur when copying **From** the Pocket PC to your computer. Since your main goal is to back up your job files, what you want to do is simply copy them to your computer, without any kind of conversion. This way, when you need the job again for the field, you would simply copy the .cez file back to your Pocket PC.

So, to turn off the automatic conversion in Microsoft ActiveSync, with ActiveSync running, go to **Tools—>Options**. Then click on the **Rules** tab, followed by clicking on the **Conversion Settings** button. Uncheck the "Convert files when synchronized, copied, or moved" box, and tap OK twice.

